



গণপ্রজাতন্ত্রী বাংলাদেশ সরকার  
শ্রম ও কর্মসংস্থান মন্ত্রণালয়  
কলকারখানা ও প্রতিষ্ঠান পরিদর্শন অধিদপ্তর

"সুস্থ শ্রমিক, শোভন কর্মপরিবেশ;  
গড়ে তুলবে স্মার্ট বাংলাদেশ"

ক্যাপ পর্যবেক্ষণের তথ্য

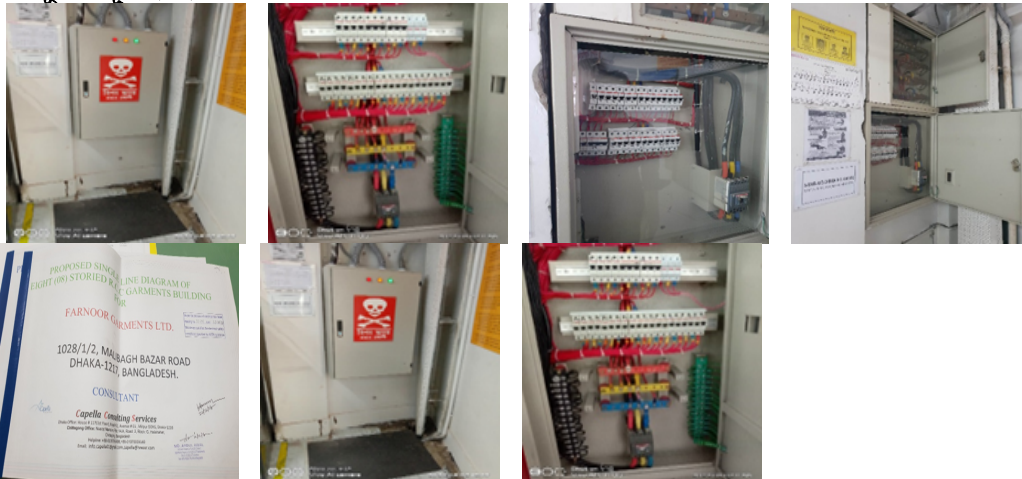
কারখানার নাম	কারনুর গার্মেন্টস লিমিটেড।
ঠিকানা	1028/1/2, Malibagh Bazar Road,
কারখানার কোড	DHK203
কালার কোড	
মূল্যায়নের ধরণ: <b>বৈদ্যুতিক মূল্যায়ন</b>	পর্যবেক্ষণের তারিখ: ২৩-০১-২০২৩
১. পর্যবেক্ষণ	

পরিদর্শন পর্যবেক্ষণ	<input type="checkbox"/> No instruction for first aid to electrical shock <input type="checkbox"/> Access obstructed/barred <input type="checkbox"/> Connection without lug <input type="checkbox"/> <input type="checkbox"/> Body & door not earthed <input type="checkbox"/> No clear identification mark on distribution board <input type="checkbox"/> SLD of circuit not available
ক্যাপ আইটেম ক্যাটাগরি	

### ১.১. কার্যক্রম

কার্যক্রম	<input type="checkbox"/> Provide duplicate earth leads. <input type="checkbox"/> Provide earthing to body & door. <input type="checkbox"/> Provide clear identification mark on distribution board <input type="checkbox"/> Connection without lug <input type="checkbox"/> Install MDB/SDB/SB or MCB on metal board.
সুপারিশের তথ্যসূত্র	
কারখানার কার্যক্রম	Initiative has been taken and they have complete this issue
অগ্রাধিকার	প্রশোজা লব
চূড়ান্ত সময়সীমা	-
সংশোধিত সময়সীমা	০১-০১-১৯৭০
অগ্রগতির অবস্থা	সংশোধিত
মন্তব্য	<p>30-06-2020 : Electrical single line diagram and layout drawings are available at site. 1. Provided clear identification mark on distribution board. 2. Found instruction board for first aid to electrical shock and artificial respiration. 3. Body &amp; Door of DB is properly earthed. 4. Insulation of rubber mats in front of Distribution boards are sufficient. 5. Multiple looping are not found in DB/MDB. 6. Connection without lug present in DB. 7. SLD of circuit are available. 19-01-2021 Visit Observation: Electrical single line diagram and layout drawings are available at site. 1. Provided clear identification mark on distribution board. 2. Found instruction board for first aid to electrical shock and artificial respiration. 3. Body &amp; Door of DB is properly earthed. 4. Insulation of rubber mats in front of Distribution boards are sufficient. 5. Multiple looping are not found in DB/MDB. 6. Connection without lug present in DB. 7. SLD of circuit are available. 16-08-2021 Visit Observation: Electrical single line diagram and layout drawings are available at site. 1. Provided clear identification mark on distribution board. 2. Found instruction board for first aid to electrical shock and artificial respiration. 3. Body &amp; Door of DB is properly earthed. 4. Insulation of rubber mats in front of Distribution boards are sufficient. 5. Multiple looping are not found in DB/MDB. 6. Connection without lug present in DB. 7. SLD of circuit are available. 02-08-2022 Visit Observation: Electrical single line diagram and layout drawings are available at site. 1. Provided clear identification mark on distribution board. 2. Found instruction board for first aid to electrical shock and artificial respiration. 3. Body &amp; Door of DB is properly earthed. 4. Insulation of rubber mats in front of Distribution boards are sufficient. 5. Multiple looping are not found in DB/MDB. 6. Connection without lug present in DB. 7. SLD of circuit are available. 23-01-2023: Electrical single line diagram and layout drawings are available at site. 1. Provided clear identification mark on distribution board. 2. Found instruction board for first aid to electrical shock and artificial respiration. 3. Body &amp; Door of DB is properly earthed. 4. Insulation of rubber mats in front of Distribution boards are sufficient. 5. Multiple looping are not found in DB/MDB. 6. Connection without lug present in DB. 7. SLD of circuit are available.</p>

### সংযুক্তিসমূহ (৭)



পরিদর্শন পর্যবেক্ষণ	<input type="checkbox"/> No instruction for first aid to electrical shock <input type="checkbox"/> Access obstructed/barred <input type="checkbox"/> Connection without lug <input type="checkbox"/> <input type="checkbox"/> Body & door not earthed <input type="checkbox"/> No clear identification mark on distribution board <input type="checkbox"/> SLD of circuit not available
ক্যাপ আইটেম ক্যাটাগরি	

### ২.১. কার্যক্রম

কার্যক্রম	<input type="checkbox"/> Provide instructions for first aid from exposure to electrical shock <input type="checkbox"/> Remove obstruction to ensure access to MDB/MCB Box
সুপারিশের তথ্যসূত্র	
কারখানার কার্যক্রম	Initiative has been taken and they have complete this issue
অগ্রাধিকার	প্রয়োজ্য নয়
চূড়ান্ত সময়সীমা	-
সংশোধিত সময়সীমা	০১-০১-১৯৭০
অগ্রগতির অবস্থা	সংশোধিত
মন্তব্য	<p>30-06-2020: Electrical single line diagram and layout drawings are available at site. 1. Provided clear identification mark on distribution board. 2. Found instruction board for first aid to electrical shock and artificial respiration. 3. Body &amp; Door of DB is properly earthed. 4. Insulation of rubber mats in front of Distribution boards are sufficient. 5. Multiple looping are not found in DB/MDB. 6. Connection without lug present in DB. 7. SLD of circuit are available. 19-01-2021 Visit Observation: Electrical single line diagram and layout drawings are available at site. 1. Provided clear identification mark on distribution board. 2. Found instruction board for first aid to electrical shock and artificial respiration. 3. Body &amp; Door of DB is properly earthed. 4. Insulation of rubber mats in front of Distribution boards are sufficient. 5. Multiple looping are not found in DB/MDB. 6. Connection without lug present in DB. 7. SLD of circuit are available. 16-08-2021 Visit Observation: Electrical single line diagram and layout drawings are available at site. 1. Provided clear identification mark on distribution board. 2. Found instruction board for first aid to electrical shock and artificial respiration. 3. Body &amp; Door of DB is properly earthed. 4. Insulation of rubber mats in front of Distribution boards are sufficient. 5. Multiple looping are not found in DB/MDB. 6. Connection without lug present in DB. 7. SLD of circuit are available. 02-08-2022 Visit Observation: Electrical single line diagram and layout drawings are available at site. 1. Provided clear identification mark on distribution board. 2. Found instruction board for first aid to electrical shock and artificial respiration. 3. Body &amp; Door of DB is properly earthed. 4. Insulation of rubber mats in front of Distribution boards are sufficient. 5. Multiple looping are not found in DB/MDB. 6. Connection without lug present in DB. 7. SLD of circuit are available. 23-01-2023: Electrical single line diagram and layout drawings are available at site. 1. Provided clear identification mark on distribution board. 2. Found instruction board for first aid to electrical shock and artificial respiration. 3. Body &amp; Door of DB is properly earthed. 4. Insulation of rubber mats in front of Distribution boards are sufficient. 5. Multiple looping are not found in DB/MDB. 6. Connection without lug present in DB. 7. SLD of circuit are available.</p>

### সংযুক্তিসমূহ (৮)



### ৩. পর্যবেক্ষণ

পরিদর্শন পর্যবেক্ষণ	□ Electric cables do not pass through service shaft or insulated conduits □ Connections without lug □ Messy wiring/cable
ক্যাপ আইটেম ক্যাটাগরি	

#### ৩.১. কার্যক্রম

কার্যক্রম	□ Provide service ducts or insulated conduits □ Ensure secured connections with lug □ Replace undressed messy wiring/cables
সুপারিশের তথ্যসূত্র	
কারখানার কার্যক্রম	Initiative has been taken and they have complete this issue
অগ্রাধিকার	৬ সপ্তাহ
চূড়ান্ত সময়সীমা	-
সংশোধিত সময়সীমা	০১-০১-১৯৭০
অগ্রগতির অবস্থা	সংশোধিত
মন্তব্য	30-06-2020: 1.Electric cables pass through service shaft. 2.Undressed messy wire is not present in DB. 3.Connection without lug present in DB. 19-01-2021 Visit Observation: 1.Electric cables pass through service shaft. 2.Undressed messy wire is not present in DB. 3.Connection without lug present in DB. 16-08-2021 Visit Observation: 1.Electric cables pass through service shaft. 2.Undressed messy wire is not present in DB. 3.Connection without lug present in DB. 02-08-2022 Visit Observation: 1.Electric cables pass through service shaft. 2.Undressed messy wire is not present in DB. 3.Connection without lug present in DB. 23-01-2023: 1.Electric cables pass through service shaft. 2.Undressed messy wire is not present in DB. 3.Connection without lug present in DB.

#### সংযুক্তিসমূহ ( ৪ )



### ৪. পর্যবেক্ষণ

পরিদর্শন পর্যবেক্ষণ	☐ No lightning protection system not available
কাপ আইটেম ক্যাটাগরি	

### ৪.১. কার্যক্রম

কার্যক্রম	☐ Provide appropriate Lightning protection system. ☐ Provide air termination network
সুপারিশের তথ্যসূত্র	
কারখানার কার্যক্রম	Initiative has been taken and they have complete this issue
অগ্রাধিকার	৬ মাস
চূড়ান্ত সময়সীমা	-
সংশোধিত সময়সীমা	০১-০১-১৯৭০
অগ্রগতির অবস্থা	সংশোধিত
মন্তব্য	On 30-06-2020 Visit Observation: Provided LPS system. 19-01-2021 Visit Observation: Approved LPS design found on site. But Lightning protection system is not install. 16-08-2021 Visit Observation: Approved LPS design found on site. But Lightning protection system is not install. 02-08-2022 Visit Observation: Lightning protection system (LPS) is installed but mismatch has been found with approved drawing. Air terminal & main conductor missing in some area. Need to install as per standard & update drawing. 23-01-2023 Visit Observation: Lightning protection system (LPS) were installed on roof of the building.

### সংযুক্তিসমূহ ( ৪ )

